

ROCKIT PARTNERSHIP ACCOUNTING & TAX

Rockit's partnership accounting and tax service allows for a seamless integration with the full Rockit platform, for greater efficiency, reliability and optimal reporting. Based on the data that is collected and processed as part of Rockit's Core offering, accountants and tax professionals perform diagnostic reviews to ensure accurate and timely investor statements and fund level financial statements, as well as schedules K-1, Form 1065, state returns and other required tax compliance.

KEY FEATURES

- » A team of accounting and tax professionals with specific expertise
- » A single source for viewing & querying data
- » A library of on-demand financial reports
- » Investor ability to look through t partnership holdings
- » Book and tax reporting
- » Expenses allocated using various methodologies, Special allocation ability
- » Incentive fee calculation
- » Commitment vehicle reporting: capital calls, recallable distributions and unfunded commitments and other metrics.



Rockit Solutions

201 Tresser Boulevard
Suite 200
Stamford, CT 06901

Inquiries@rockitco.com
203.883.7400

The screenshot displays the Rockit Solutions software interface. The top navigation bar includes "Overview", "Performance", "Reports", "Issued Reports", and "Services". The main content area is divided into two sections: "Ledger Balances" and "Journal Entries".

Ledger Balances

Client	Account	Ledger Account	Ledger Account Name	Principal Balance	Income Balance	Balance	Ledger Date
1021	S						
1021	S						
1021	S						
1021	S						
1021	S						

Journal Entries

Effect Date	Process Code	Ledger Account	Ledger Account Name	Debit	Credit	Amount	P12	Explanation	Sec Symbol
05/01/2013	UR	2014	Securities adjustment to market	D		\$73.32	P	Summary unrealized gain/loss	
05/01/2013	UR	5900	Unrealized Gain - Market Value Adjustment	C		\$73.32	P	Summary unrealized gain/loss	
05/01/2013	AutoRec	1	Cash - Operating	D		\$540.00	I	Dividend Receipt	T
05/01/2013	AutoRec	3223	Deferred Income - Accrued Div	D		\$540.00	I	Dividend Receipt	T
05/01/2013	AutoRec	1023	Accrued Dividends Receivable	C		\$540.00	I	Dividend Receipt	T
05/01/2013	AutoRec	5010	Dividends Domestic	C		\$540.00	I	Dividend Receipt	T
05/01/2013	AutoRec	1	Cash - Operating	D		\$337.50	I	Dividend Receipt	T
05/01/2013	AutoRec	3223	Deferred Income - Accrued Div	D		\$337.50	I	Dividend Receipt	T
05/01/2013	AutoRec	1023	Accrued Dividends Receivable	C		\$337.50	I	Dividend Receipt	T
05/01/2013	UR	2014	Securities adjustment to market	D		\$53,217.64	P	Summary unrealized gain/loss	
05/01/2013	UR	5900	Unrealized Gain - Market Value Adjustment	C		\$53,217.64	P	Summary unrealized gain/loss	
05/01/2013	CustTrn	9016	Transfer to Oth Cust Acc - Cash	D		\$877.50	I	Cashly Transfer to Dr. Henry Applegate - Transfer to Cash Account	
05/01/2013	CustTrn	1	Cash - Operating	C		\$877.50	I	Cashly Transfer to Dr. Henry Applegate - Transfer to Cash Account	
05/01/2013	IncAccr	1027	Accrued Interest Receivable	D		\$3,307.69	I	Summarized interest accrual	UNRECBAS

**PRESERVING
WEALTH
THROUGH
INNOVATION**

 WWW.ROCKITCO.COM

 FACEBOOK Follow us

 LinkedIN Connect with us

ROCKIT OVERVIEW

Wealth information management is critical in today's global investing environment! A platform on which you can depend on, can greatly ease the burden of heavy lifting that accompanies complex information management. One that provides transparency and helps to make sense of: timely, comprehensive information about your accounts, managers, and strategies in addition to your cash flows; expenses, taxable income; partnership allocations and more. Let Rockit® Solutions be that platform for you.

WHAT IS ROCKIT?

Rockit Solutions, LLC is a leading technology-enabled service offering. We are a wealth reporting and accounting platform solution for single-family and multi-family offices, boutique investment advisors, trust companies and other institutions. Our solution suite includes:

- ✓ Data Aggregation, Reconciliation & Data Enrichment
- ✓ Investment & Performance Reporting
- ✓ Portfolio Accounting
- ✓ Principal & Income/Trust Accounting
- ✓ Partnership Accounting & Tax Services
- ✓ General Ledger and Financial Reporting

Data Confidence

While some services import data from just one source, Rockit captures data from the initiators of transactions – the asset managers and other advisors – and reconciles that data to the custodian.

Rockit® Command

The powerful technology platform, used by financial professionals to dig deep into accounts and activity for analysis. The integrated general ledger provides a deeper level of information awareness to investment decision makers and other trusted advisor. Data maintained in Rockit Command is easily retrieved through either ad-hoc queries or from a rich library of reports reflecting different levels and slices of the data.

Portfolio View™

Rockit's web-based tool for wealth holders and advisor that provides secure access to critical information. Portfolio View offers easy and intuitive access to your accounts online. Filtered search, grouping, export tools, archived statement access, principal and income and performance reporting are available through Portfolio View.

Partnership Accounting and Tax Services

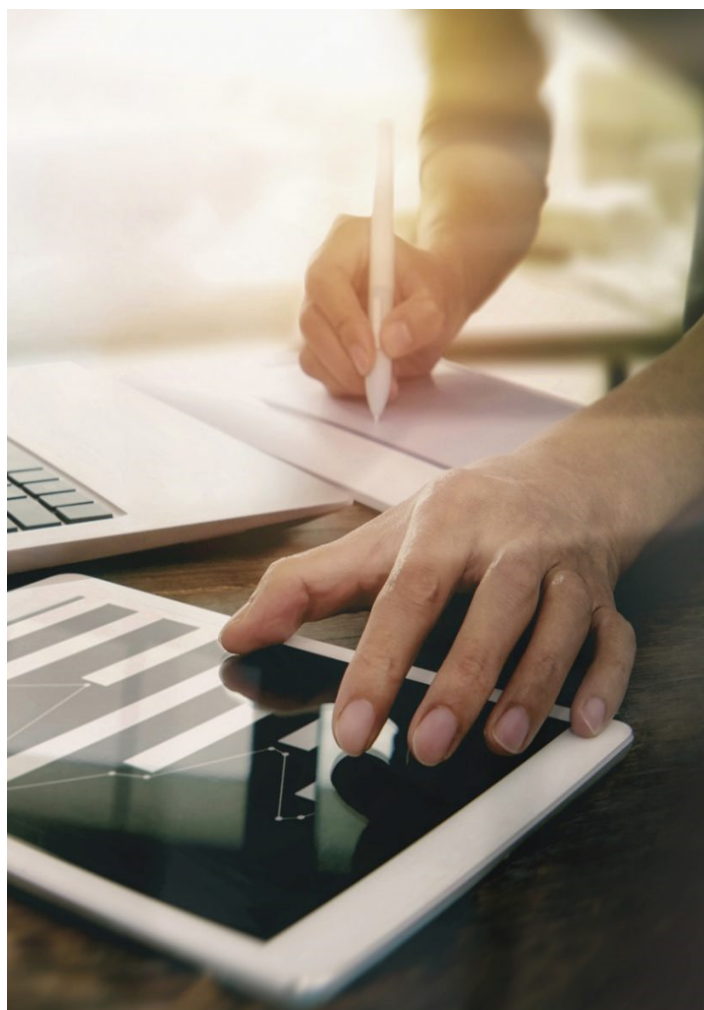
A service available for those who invest through family limited partnerships or other privately-pooled investment vehicles. These services are provided by qualified professionals in the accounting and tax fields.

IMPACT FOR CLIENTS

Up-to-date information - Transactions applied daily to client accounts. Information feeds for pricing, income and corporate action events facilitate consistent information across portfolios. A group of investment operations and administration professionals reconciles and reviews this information in order to provide comprehensive and up-to-date information to our clients.

Customization without complexity - Rockit provides training, report customization, and relationship support for efficiency and to meet client needs. Rockit delivers the power of a robust technology platform adapted to the client relationship by personnel dedicated to client service.

Look-through capability for partnership holdings - When Rockit provides Partnership Accounting services, partners have the ability to look through their partnership holdings to the underlying investments. This enables a broader view of investment risk and market exposure.



ROCKIT PERFORMANCE

Rockit's Suite includes investment performance services; review and validation and support services as well as reporting. Daily, time-weighted returns, internal rate of return and various other metrics are available. Flexible consolidation of accounts, blending and tracking against standard and custom benchmarks and customizable template-driven reporting round out Rockit's performance service.

KEY FEATURES

» Portfolio Metrics

- Daily Time-weighted Returns
- Internal Rates of Return
- Relative Returns
- Risk Metrics (e.g. S.D. Sharpe, Alpha, Beta and others)
- Private Investment Metrics (e.g. MOIC, TVPI, Net Invested Capital)

» Benchmark Returns

- Index returns
- Blended benchmarks (changes tracked by effective date)
- Custom benchmarks (client provided)

» Consolidated Reporting

- Consolidated Accounts - a predefined collection of accounts for which changes in membership is tracked by date
- Family Groupings
- Composites

» Template driven reporting

- Allows for client customization
- Defines report formatting (e.g. indent, bold, italic, etc.)
- Returns of varying levels in a single report (e.g. account, segment, consolidation, etc.)
- Defines the data elements and what labels are used
- Defines the timeframes reported (e.g. 1, 3, 5 yr., etc. - custom timeframes available)

» Data Integrity & Enrichment

- Single pricing source ensures consistency across multiple portfolios
- Independent processing and reconciliation
- Asset and Industry classifications
- Daily reconciliation (cash, positions, transactions) Rockit to Custodian
- Exception based return investigation and transaction review